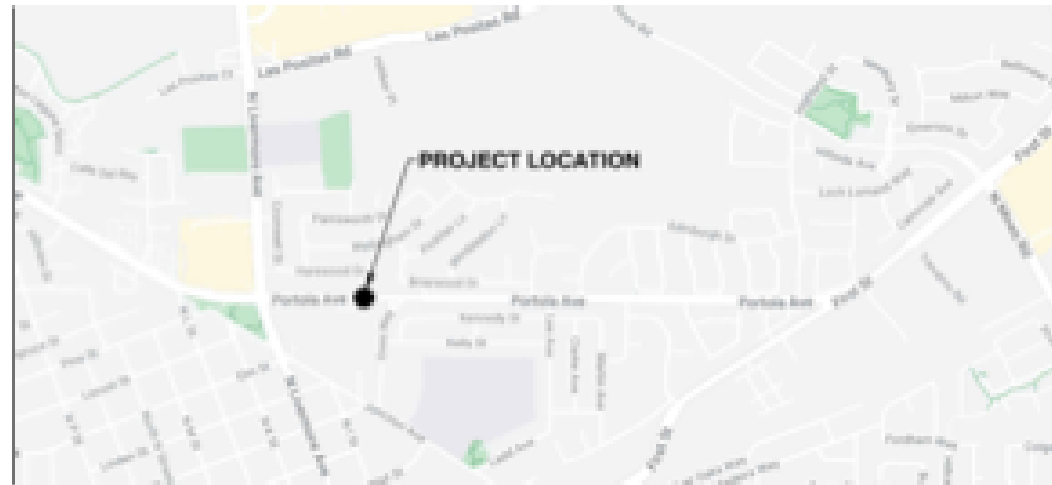


### The City of Livermore's upcoming Lawrence Elementary School Safe Routes to School Improvements Project.



This project will be constructed with the use of Alameda County Transportation Commission (ACTC) administered funds (2000 Measure B).



This project will install improvements in order to further enhance safety for the Lawrence Elementary school crossing on Portola Avenue at Enos Way.

#### Purpose And Need:

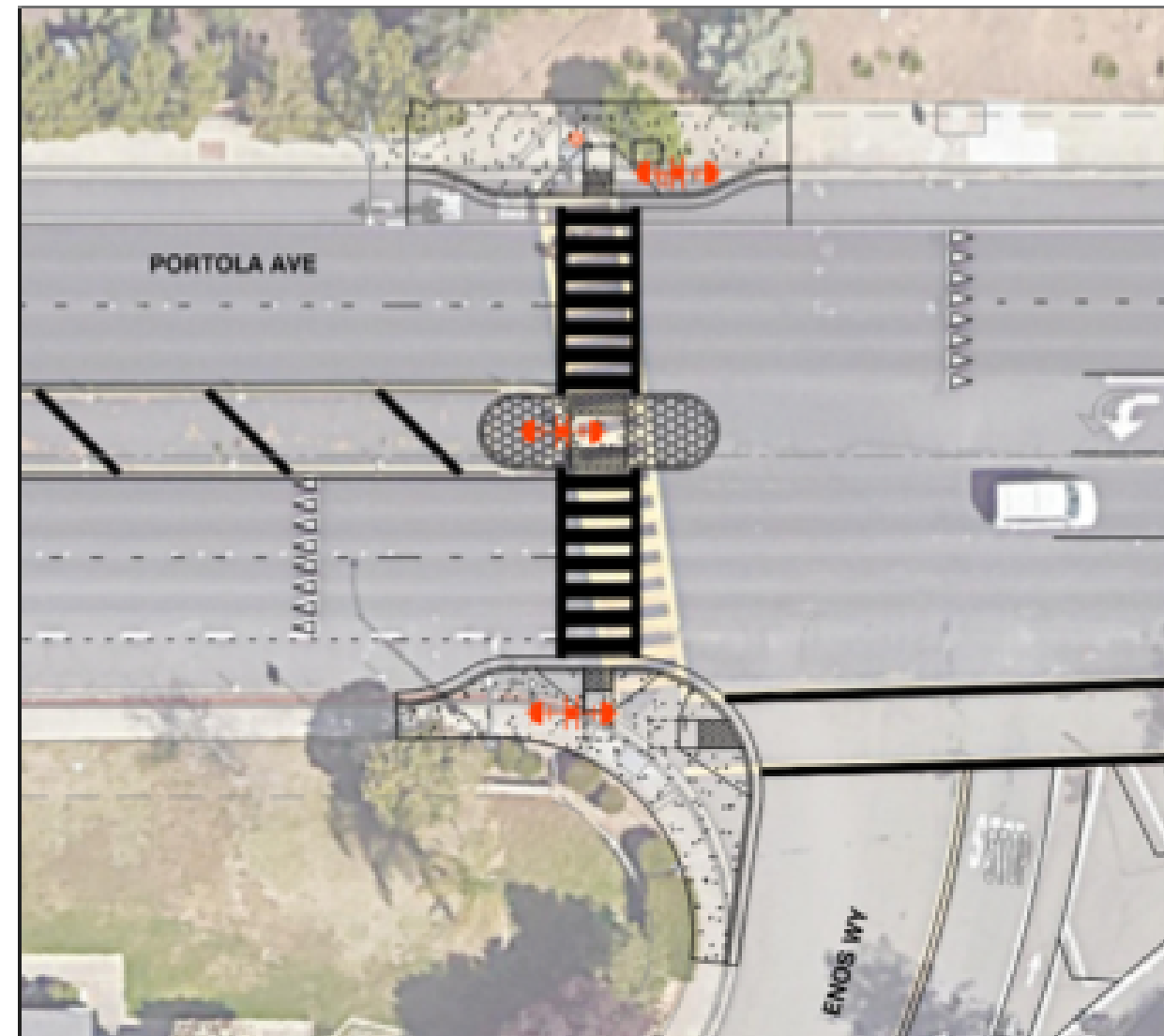
Portola Avenue is designated as a major roadway carrying approximately 9,500 vehicles per day. The posted speed limit in the project area is 35 MPH. Lawrence Elementary School is roughly 300 feet west of the Portola/Enos intersection making this a busy school crossing intersection during school days. School age pedestrians crossing Portola need to walk through five lanes of uncontrolled high speed traffic and bike lanes. Shortening the crossing distance and providing additional notification to motorists would help further enhance pedestrian safety.

**Pedestrian Facilities** - Improvements at Portola Avenue/Enos Way intersection include pedestrian activated Rectangular Rapid Flashing Beacons (RRFB) system, yield markings, realignment of crosswalk, bulb-outs, Americans with Disability Act (ADA) ramps, and Median Island to help increase driver awareness of pedestrians, increase compliance in yielding to pedestrians, and shortening the distance and time the pedestrians are in the roadway.

#### THANK YOU IN ADVANCE

The City of Livermore thanks the neighbors and roadway users in advance, for their patience and cooperation as we continue to develop the design and proceed into the construction phase.

Please visit our website for project updates at <https://www.cityoflivermore.net/government/community-development/engineering/project-information>



Portola Ave and Enos Way



#### PLEASE FEEL FREE TO CONTACT THE CITY WITH ANY QUESTIONS:

City of Livermore, Community Development Department

Juan Tenorio, Junior Engineer

Phone : 925-960-4554

Email: [jtenorio@livermoreca.gov](mailto:jtenorio@livermoreca.gov)

- City's Project Manager: Juan Tenorio
- Consultant: TJKM
- Current Phase: 65% Design
- Tentative Construction Schedule: Spring 2023
- Funding: ACTC, BAAQMD
- Estimated Construction Cost: \$305,300