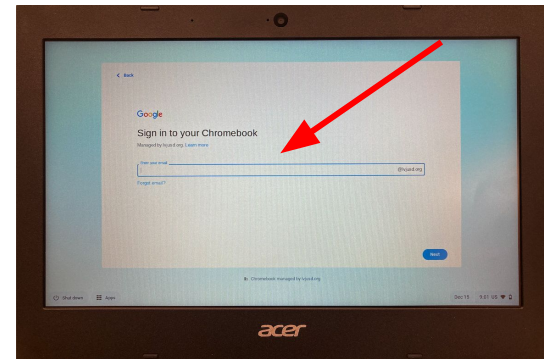


Powering Up and Signing Into Your Chromebook

To power on your Chromebook, press and hold the power button in the upper right hand corner of your keyboard.



On the login screen enter the user name that was provided to you. This is usually your first name and the first three letters of your last name (ex. michelle.seu), however, there are exceptions so if you aren't sure, please ask your teacher.



Enter the password that was provided to you. If you aren't sure what your password is, please ask your teacher.

